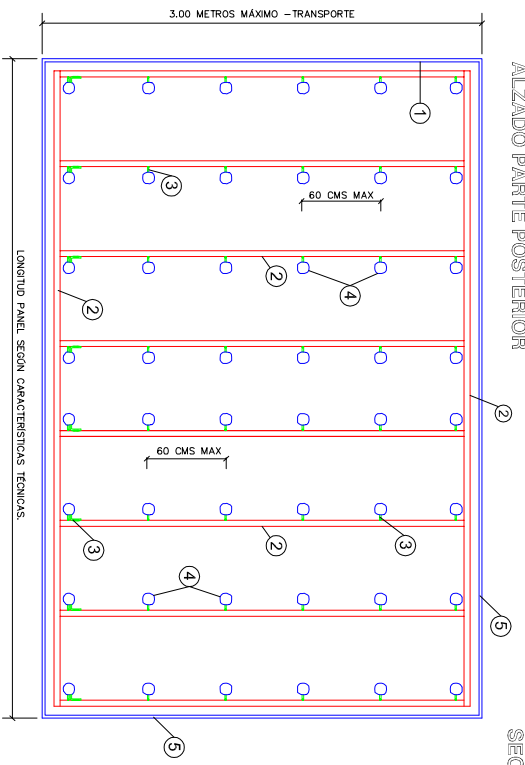
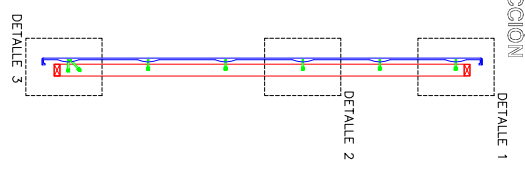


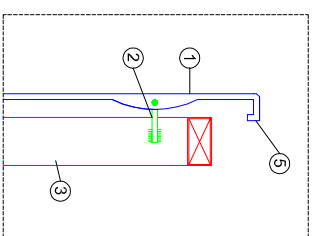
ALZADO PARTE POSTERIOR



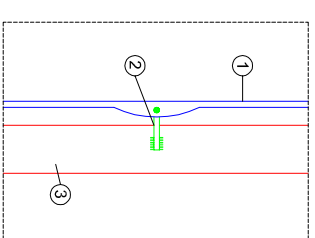
SECCIÓN



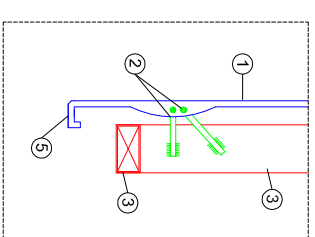
DETALLE 1



DETALLE 2



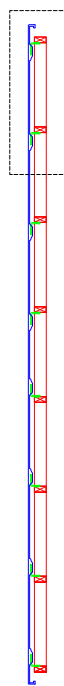
DETALLE 3



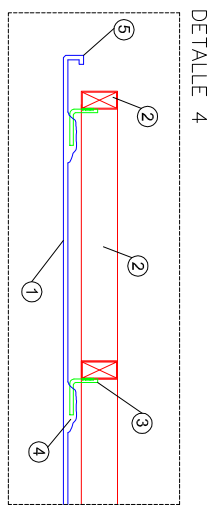
LEYENDA

- 1 LAMINA DE GRC
- 2 BASTIDOR METALICO 80.40.2
- 3 CONECTORES Ø 8
- 4 MASA DE GRC EN CONEXION LAMINA-CONECTOR
- 5 VUELTA GRC-RIGIDIZADOR PERIMETRAL
- 6 CORDON DE SELLADO -MASILLA POLIURETANO
- 7 ESCUADRA DE ANCLAJE
- 8 TACO MECANICO TIPO HILTI
- 9 ANCLAJE MECANICO

DETALLE 4

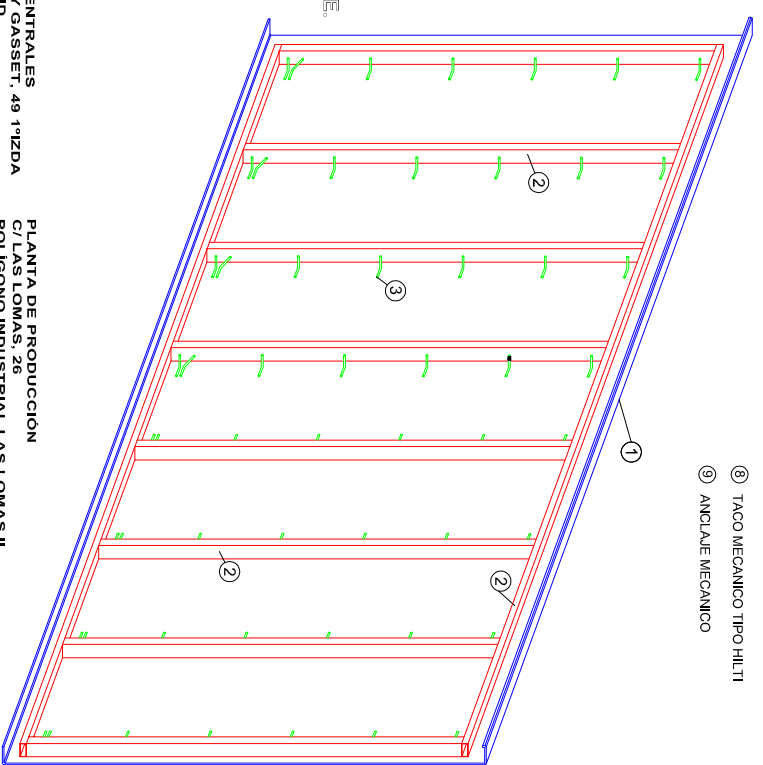


PLANTA

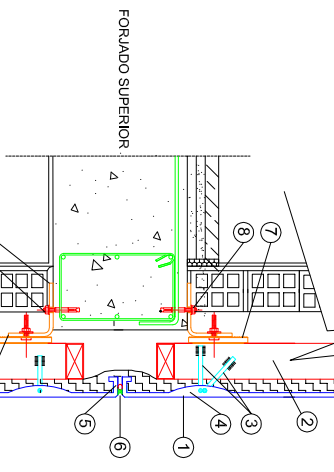


DETALLE 4

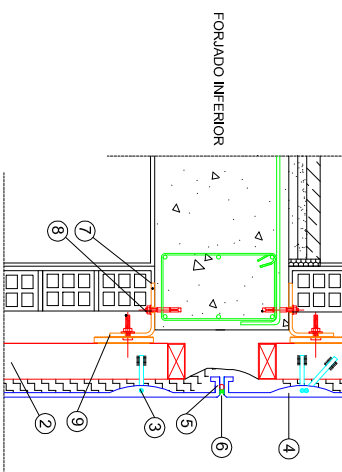
VISTA ISOMETRICA
PARTE POSTERIOR
PANEL GRC STUD-FRAME.



SECCION CONSTRUCTIVA
FORJADO SUPERIOR.



SECCION CONSTRUCTIVA
FORJADO INFERIOR.



PANEL STUD FRAME



OFICINAS CENTRALES
C/ ORTEGA Y GASSET, 49 1ªZDA
28002 MADRID
TEL: 902 40 57 20
E mail: info@housingformula.com

PLANTA DE PRODUCCION
P/LAS LOMAS, 28
POLIGONO INDUSTRIAL LAS LOMAS II
16200 MOTILLA DE PALANCA - CUENCA